

INSTRUCTION MANUAL

1 GENERAL

The DAA has been designed as a tire changer accessory to help the operator to mount the tire on the rim or to demount it.

The use of this device is limited to that specified in this manual. Any other use is improper and therefore not authorized. Before beginning any kind of work on or with this machine, carefully read and understand the contents of these operating instructions.

We shall not be liable for any injury to persons or damage to things caused by improper use of this machine.

Please keep this manual handy for consulting.

2 TECHNICAL PARAMETERS

Working Pressure	8~10 bar
Net Weight	150kg
Noise Level	<70dB

3 SAFETY REGULATIONS

The operator must be a well –trained professional personnel.

This device could only function when work together with our tire changer.

We won't responsible for any unauthorized modifications.

4 INSTALLATIONS

NOTICE:

The installation of this auxiliary device should be done by professional personnel.

Before any assemblies, turn off the power of both electricity and compressed air.

4.1 TRANSPORTAION

Move the machine with a forklift truck as illustrated in Fig-1

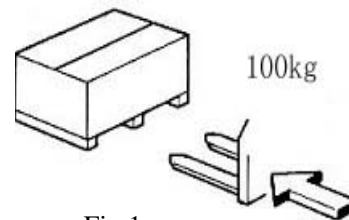


Fig.1

4.2 UNPACKING

Remove the packaging carefully and check the machine, if there are any damages or defects, please contact with us or with the dealer timely.

Please keep the packaging out of the children's reach.

Please keep the packaging for possible future needs.

4.3 WORKPLACE REQUIREMENTS

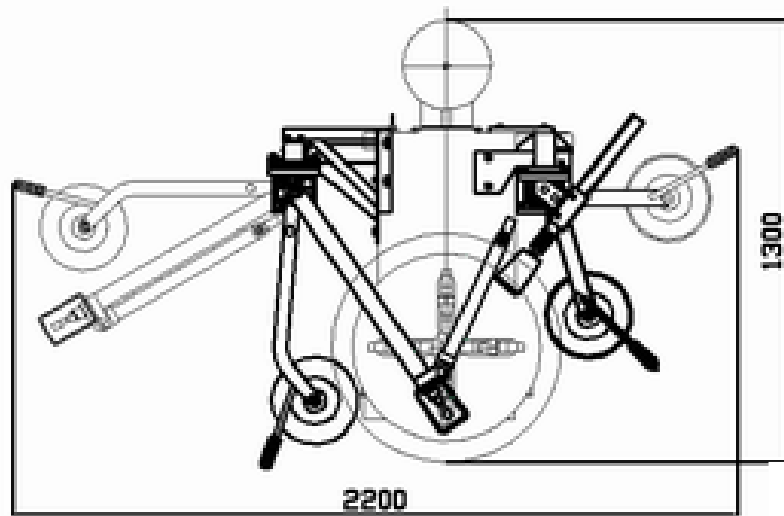
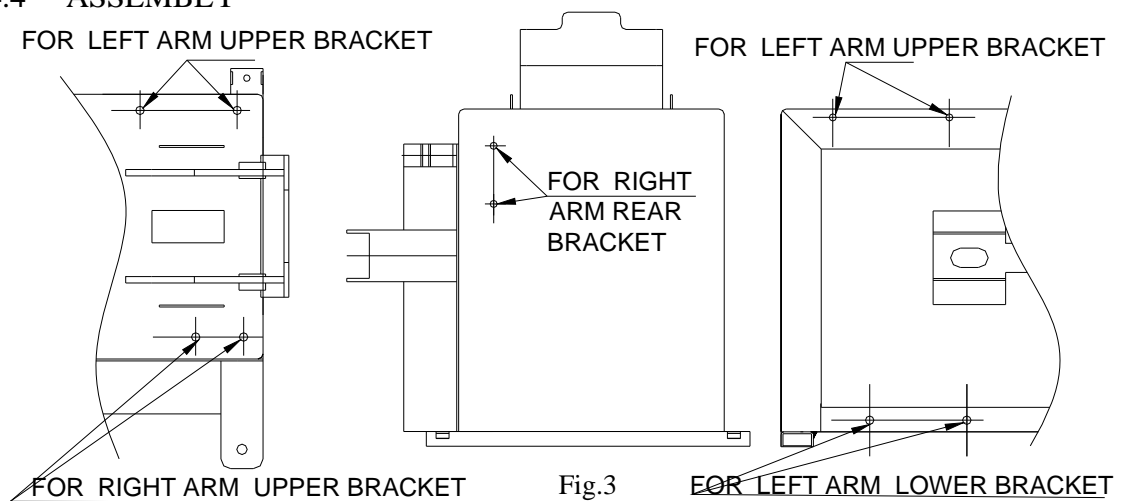


Fig.2

Fig-2 shows maximum machine space requirements and minimum distance of 500mm from walls.

4.4 ASSEMBLY



The following steps show how to install the DAA device.

- 1) Disconnect the tire changer from the electric power source and the compressed air circuit.
- 2) Mount the side bracket and rear bracket to the corresponding position. Then assemble the DAA device on the tire changer body. (Fig.3)
- 3) Connect the air hose (Ø8mm) that introduced through the rear hole of the box with the corresponding joint of T-union.
- 4) For IP version, connect the hose (Ø8mm) through the back of the body to the fittings of the five-way valve according to corresponding marks.

5 LAYOUT OF FUNCTIONAL PARTS

Fig-4 shows functional members of the DAA device

1-Mounting block holding forearm

2-Control valve lever

3-Mounting block holding rear arm

4-Complete mounting block

(The upper is pressing block and the lower is centering block)

5-Left bead-breaking disc

6-Left disc holding arm

7-Roller holding arm

8-Pressing roller

9-Right disc holding arm

10-Right bead-breaking disc

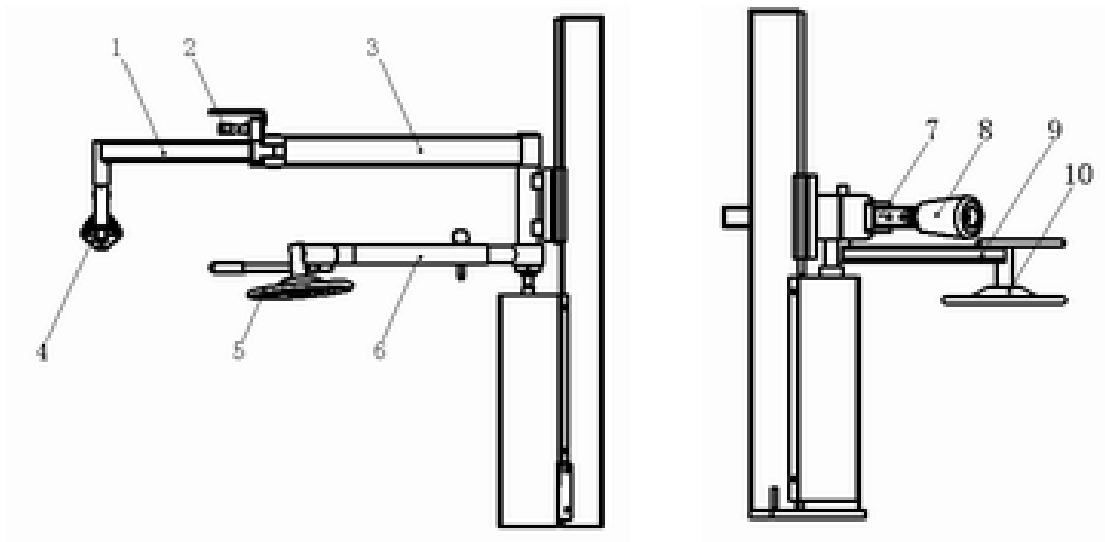


Fig.4

6 SPECIFICATION OF CONTROL VALVE

Controlling the control valve level could attain the rise or decline of the tool holding arms.

7 TRIAL OPERATIONS

The DAA device must connect with air compressor, and 8 bar air pressure is desirable.

8 SAFETY REGULATIONS

WARNING:

Unreadable or missing warning labels must be replaced



immediately.

Operations are not permitted when one or more labels are missed.

It is not allowed to prevent the view of the operator to see the labels when running the machine.

It's reasonable to set up some labels as Fig shows.

9 OPERATIONS

The DAA device has been designed to facilitate the operations of wheel locking and mounting/demounting the tire on or from the rim. These operations, especially with low profile or very wide sports car tires or with very hard beads, can be very difficult. In any case, the DAA device would make these jobs easier on any type of wheel.

9.1 CLAMPING THE TIRE

Correctly follow this manual, release the beads both side of the tire. It's more forceful to use the DAA device. Clamping the tire from outside is recommended. (Plastic protections are available Fig-5) .

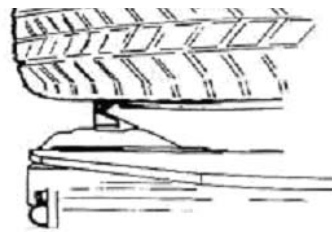


Fig.5

- 1- Depress the corresponding pedal to open the jaws, and turn the spindle to its non-working position.
- 2- Lay the wheel onto the turntable, depress the corresponding pedal to close or open the jaws for the clamping of the rim.

9.2 DEMOUNTING THE TIRE

1. Firstly break and loosen the beads if it is necessary.

- a- Loosen the locking nut to lower the pressing roller, make sure the roller is above the tire and not touching it.
- b- Turn the control lever to bottom, lower the roller holding arm to press the tire with pressing roller. Depress the corresponding pedal to turn the turntable to loosen the bead. Turn the turntable repeatedly if it is necessary. (Fig-6)



Fig.6

c- NOTICE:

Before any operations, lubricate the bead of the wheel.

After loosen the bead, more depress the roller holding arm and begin the next demounting.

2. Demount the upper bead.

Close the mounting block to the upper bead as the manual stated.

Depress the pressing roller (or the pressing block (Fig 7.2)), and then insert

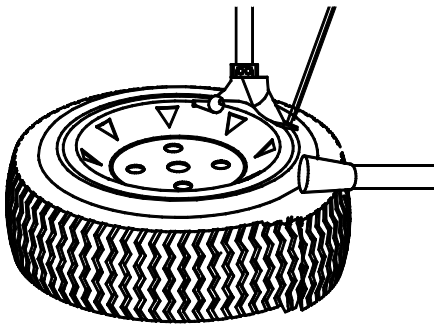


Fig.7.1

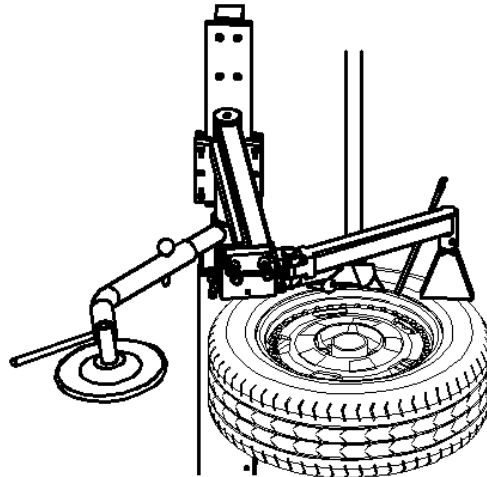


Fig.7.2

the tire lever into the clearance between the rim and bead. (Fig-7.1)

a- Raise the pressing roller, swivel the mounting block holding arm to the opposite side, control the pressing block, insert it into the drop-center rim, and the tire will slide into the center drop. This could get enough space for operations. (Fig-8)

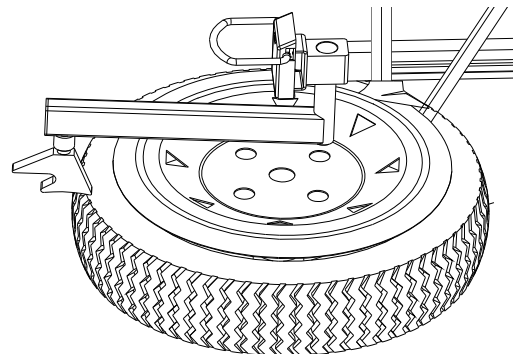


Fig.8

b- Pull out the bead with the help of mounting head and hang it on the mounting head.

c- Raise the mounting block, push the mounting block to its non-working position.

d- Depress the pedal to turn the turntable; the upper bead will be detached off.

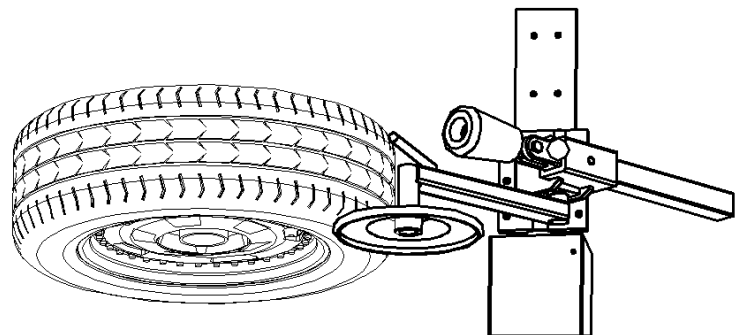


Fig.9

3. Loosen the second bead if it is necessary.

a- Push away the mounting block holding arm.

b- Position the right bead-breaking disc under the tire, and make sure it close to the tire other than touch the tire. (Fig-9)

c- Hold the handle of the disc and exert an inner-toward force to assure the right bead-breaking disc touch against the lower bead tightly. Depress the pedal to turn the

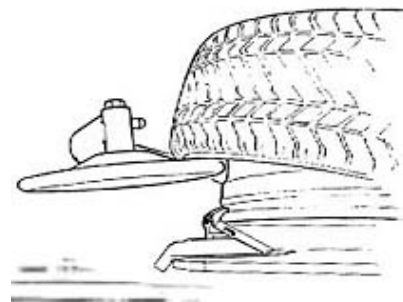


Fig.10

turntable, meanwhile raise the disc slowly to detach the lower bead. (Fig-10)

4. NOTICE:

For some tires could be disassembled by only using the bead-breaking disc, so it is enough continue the third step until the tire was detached off.

Combination with the bead-breaking disc make it is easier to demount the wider tires and sport car tires.

- a- Raise the lower bead up to center drop of the rim with the help of the bead-breaking disc.
- b- Hook the detached part of tire on the mounting head.
- c- Remove the disc; turn the turntable clockwise until the lower bead comes off the rim.

9.3 MOUNT TIRES

1) Set up the first bead according to tire changer instruction

2) WARNING!

Push away the tool holding arms to avoid danger of collision!

Move the mounting block and depress it to a depth of 3 cm below the upper side of the rim.

DANGER!

3) Please pay special attention during this procedure. Pressing the rim with the pressing block is not permitted. It will lead to danger. Keep away hands from the mounting block.

4) Depress the corresponding pedal to turn the turntable; the mounting block holding arm will turn also. Depress the tire blow into the rim. During this procedure, it is free from any human interference or other assistants. (Fig-11)

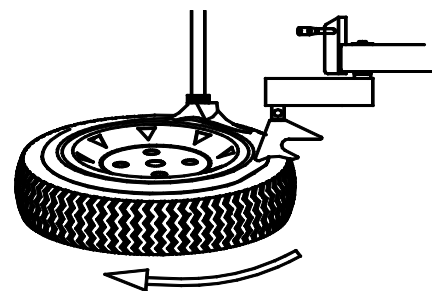
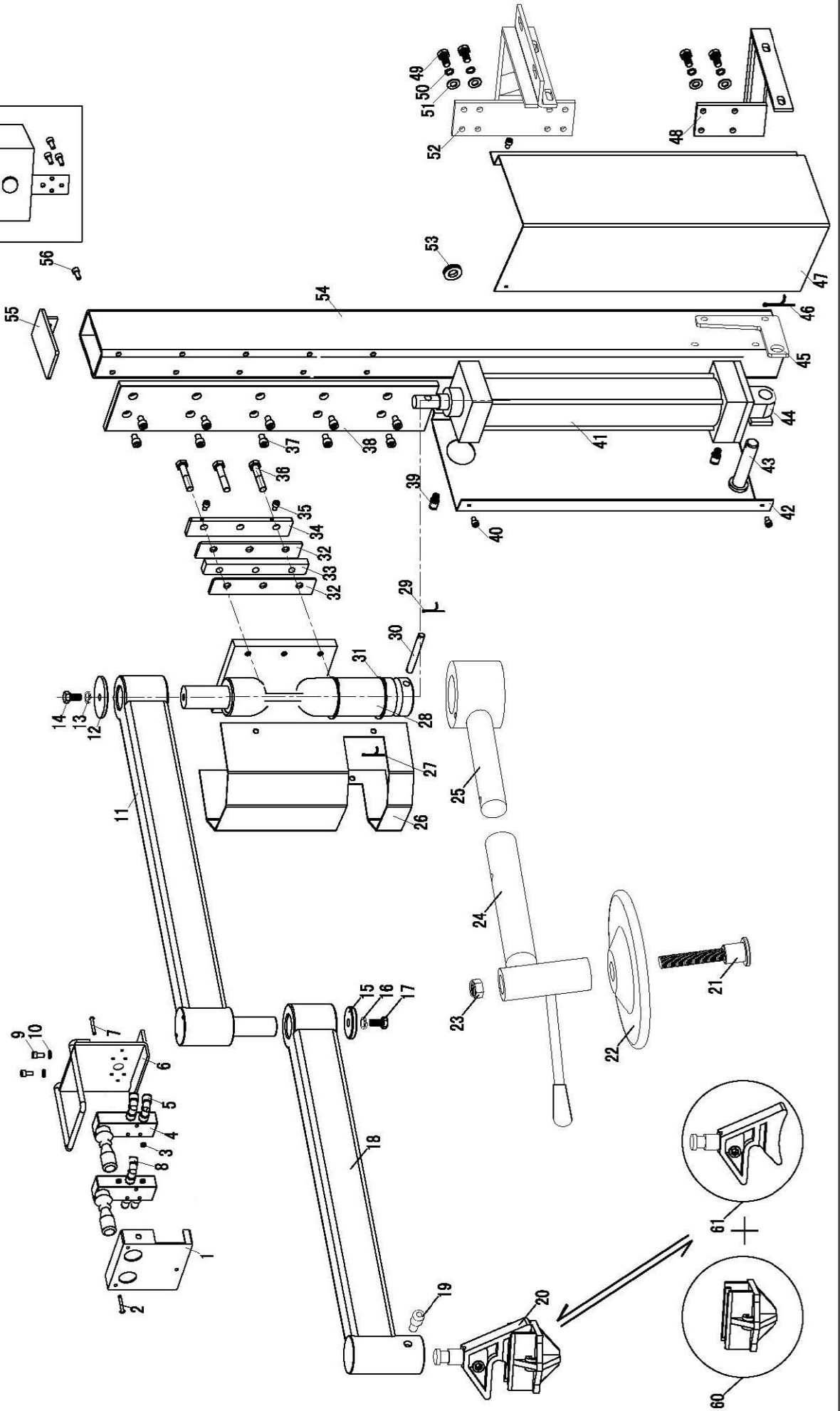
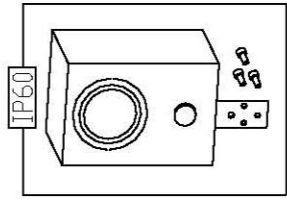
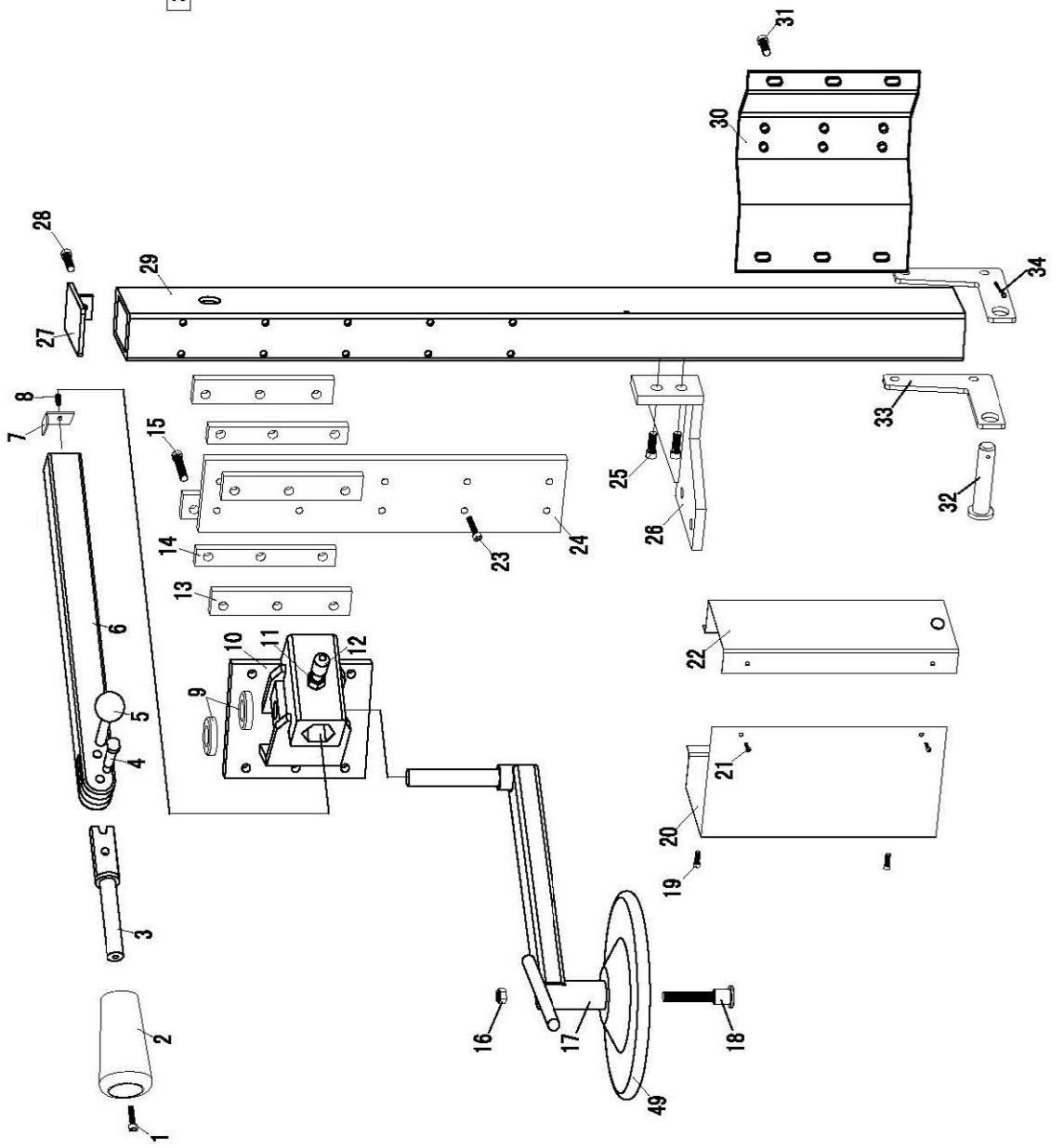
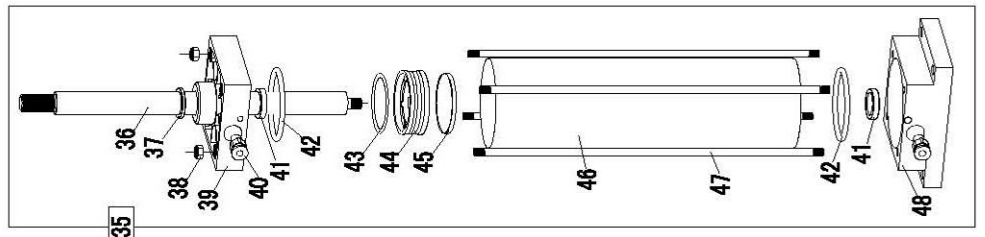


Fig.11

10 TROUBLE SHOOTING AND MAINTENANCE

Phenomena	Switch level is not flexible
Analysis	1) Disconnected with compressed air
	2) Air hose is folded or broken
	3) Valve is broken
Solution	1) Connect with the compressor according to the manual
	2) Inspect the air hose, replace the broken hose and joint
	3) Please contact with the department of after sale





DAA (RIGHT ARM) SPARE PART LIST

No.	Code	Part Name	QTY	No.	Code	Part Name	QTY
1	GB/T818-1985	screw M10X15	1	26	DAA.09.00	side connection support	1
2	DAA.03.01	bead roller	1	27	DAA.07.00	post end-shield	1
3	DAA.03.02	tire roller shaft	1	28	GB/T818-1985	screw M6X30	1
4	DAA.03.05	pin1	1	29	DAA.01.00	right post	1
5	DAA.03.05	pin2	1	30	DAA.08.00	mounting bracket	1
6	DAA.03.03	Roller holding arm	1	31	GB/T818-1985	bolt M12 x 30	12
7	C2330118	Limit stop for roller holding arm	1	32	DAA.03.00	support pin	1
8	GB/T 70	screw M6X30	1	33	DAA1.02.00	L shape support	2
9	GB/T6170-1986	nut M20X1.5X10(thick)	2	34	GB/T91-1986	circlip	1
10	DAA.04.00	Support for roller holding arm	1	35	YDAA.01.00	completed cylinder	1
11	DAA.04.07	nut M12	1	36	YDAA.01.00.01	piston rod	1
12	DAA.05.00	locking bolt	1	37	GB/T3452.1-1992	gasket	1
13	DAA.10.00	slot1	4	38	GB/T 1337	nut M8	4
14	DAA.11.00	slot2	2	39	YDAA.01.00.02	cylinder mounting top	1
15	GB/T818-1985	screw M10X60	6	40	PC08-01	pressure fitting	2
16	GB/T5782-1986	screw M12X80	1	41	GB/T3452.1-1992	gasket	2
17	DAA.04.08	Right disc holding arm	1	42	JB 1092	gasket	2
18	DAA1.30.00	Disk hub	1	43	JB 1092	gasket	1
19	GB/T 70	bolt M8 x 15	4	44	YDAA.01.00.03	piston	1
20	DAA.02.00	cylinder support board	1	45	GB/T3452.1-1992	gasket	1
21	GB/T 973	screw M5 x 10	2	46	YDAA.01.00.04	cylinder	1
22	DAA.12.00	protection hood	1	47	YDAA.01.00.05	cylinder mounting rod	4
23	GB/70	bolt M8 x 15	10	48	YDAA.O1.00.06	cylinder mounting base	1
24	DAA.06.00	guide board	1	49	DAA.40.00	bead breaker disk	1
25	GB/T818-1985	screw M12X30	2				

DAA (LEFT ARM) SPARE PART LIST

No	Part code	Part Name	QTY
1	FZ.00.04.2	valve cover	1
2	GB/T 70-85	bolt M6 x 12	3
3	GB/T818-1985	screw M4 x 30	4
4	4H310-10	valve control unit	2
5	PL08-01	L union	4
6	2009-06(DY)-06	Valve box	1
7	GB/T818-1985	screw M4 x 30	6
8	PT-3T	T union	1
9	GB/T97.1-85	gasket washer ϕ 6	2
10	GB/T 70-85	bolt M6 x 15	2
11	DAA1.16.00(09)	back swing arm	1
12	ACAP.25	gasket	1
13	GB/T93-87	spring washer ϕ 10	1
14	GB/T5783-2000	bolt M6 x 15	1
15	2009-06(DY)-15	washer	1
16	GB/T93 -87	spring washer ϕ 10	1
17	GB/T5783 -2000	bolt M10 x 15	1
18	DAA1.26.00	front swing arm	1
19	DAA1.21.00	locking bolt	1
20	DAA1.22.00(A)	completed mounting block	1
21	DAA1.30.00	bead breaker disk axle	1
22	DAA1.40.00	bead breaker left disk	1
23	GB/T5782-1986	nut M12	1
24	DAA1.27.00	disk suspension	1
25	DAA1.24.00	suspension support arm	1
26	ACAP.05	axle guard	1
27	GB/T91-1986	circlip ϕ 4 \times 35	1
28	DAA1.11.00	carriage axle	1
29	GB/T91-1986	circlip ϕ 4 \times 35	1
30	DAA1.06.00	pin	1
31	GB/894.1-86	spring D=60	2

No	Part code	Part Name	QTY
32	DAA.09.00	front slot	4
33	DAA.10.00	slot 1	2
34	DAA.11.00	slot 2	2
35	GB/T 70-85	bolt M6 x 10	4
36	GB/T5783-2000	bolt M10 x 50	6
37	GB/T 70-85	bolt M8 x 20	10
38	DAA.13.00	axle guideboard	1
39	PC08-01	pressure fitting ϕ 6	2
40	GB/T5782-1986	bolt M6 x 15	1
41	ZDAA.01.00	completed cylinder	1
42	DAA.05.00	cylinder cover 1	1
43	DAA1.03.00	cylinder rod	1
44	ZDAA.01.00.06	cylinder shackle	1
45	DAA1.02.00	L shape cylinder mounting	2
46	GB/T91-1986	circlip ϕ 4 \times 35	1
47	DAA1.05.00	cylinder cover 2	1
48	DAA.23.00	base mounting unit	1
49	GB/T5782-1986	bolt M10 x 20	10
50	GB/T93-87	spring washer	10
51	GB/T97.1-85	soft washer ϕ 10	10
52	DAA1.19.00	upper mounting unit	1
53	DAA1.19.01	hoses guardwasher ϕ 28	1
54	DAA1.12.00	vertical axle	1
55	DAA1.14.00	post end-shield	1
56	GB/T5782-1986	screw M4 x 15	1
57			
58			
59			
60	I2330339	Complete IP box	1
61	DAA1.40.00.01	Mounting block 1	1
62	DAA1.40.00.02	Mounting block 2	1